



iPF600/500

Quick Product Overview

WE FOUND A WAY TO BOX-UP VERSATILITY

The Canon imagePROGRAF® iPF600 and iPF500 means bold, precise color rendering is well within your reach. Whether it's business graphics or technical drawings, these new imagePROGRAF products have what it takes to get the job done!

For **Business Graphics Applications**, the iPF600/500 combine easy enlargement printing features, Canon's PosterArtist and robust printing software with bold dye inks, borderless printing capability and up to 2400 x 1200dpi output. These combined features allow the user to create full color, full-bleed posters and designs quickly and easily.

For **Technical Document Applications**, the iPF600/500 utilizes over 5,000 nozzles of matte black pigment ink and 4 color dye inks to output crisp, color or monochrome line drawings and design renderings at remarkable speeds. The HDI driver offers a Heidi interface that allows for direct printing from AutoCAD.



At-a-Glance Specifications

Printer Width- Stand	iPF600- 24" Stand Included / iPF500- 17" Cabinet Optional				
Ink Type	Dye and Pigment Ink Set Dye { C, M, Y, BK } Pigment {MBK, MBK}				
Max Resolution	2400 x 1200 dpi				
Ink Tank size	130ml				
Print Head	End-user replaceable, <i>PF-01</i>				
Nozzles	15,360 total nozzles 2,560 nozzles for dye (C, M, Y, K) 5,120 nozzles for pigment (MBK)				
Memory (RAM)	iPF600 192mb / iPF500 128mb				
Standard Interface	USB 2.0 & 10/100-Base T/TX				
Borderless Printing	All four sides with specified roll sizes				
Media Thickness	0.08mm - 1.5mm (depending on path)				
Line Accuracy	±0.1% or less				
Driver Software	Windows® 98SE/ME/2000/XP/2003 Server, Macintosh® OS 9.1/X 10.2/10.3/10.4				
Included Software	Printer Driver 2006, Printer Driver Extra Kit (Free Layout, imageRUNNER Linking Function) PosterArtist 2006, HDI Driver				
Roll Capacity (Single Roll)	Core Sizes: 2" or 3" core Maximum Roll Outer Diameter: 5.9" (150mm)				
CAD iPF600/500 Line Drawing Print Speed (mins, secs)¹	Paper Type	Print Mode	Resolution	iPF600	iPF500
				A2 Size	A1 Size
	Plain Paper	Fast	1200x1200	35 secs	21 secs
		Standard	1200x1200	44 secs	26 secs
Coated Paper	Fast	1200x1200	46 secs	28 secs	
	Standard	2400x1200	1' 20"	47 secs	
GRAPHICS iPF600/500 Image Print Speed (Square Feet Per Hour)²	Paper Type	Print Mode	Resolution	iPF600	iPF500
				A2 Size	A1 Size
	Plain Paper	Fast	1200x1200	514	415
		Standard	1200x1200	304	238
Coated Paper	Standard	1200x1200	146	122	
	High	2400x1200	69	60	

1) iPF600/500 Line Drawing Print Speed (mins, secs) [CAD drawing]OS: Windows XP SP2, CPU: Pentium4 3.2 GHz, RAM: 1 GB, Application: AutoCAD 2004 LT, driver: HDI driver, Interface: USB 2.0 Hi-Speed, Output image size: iPF700: A0 (32.5" x 40.6" or 827 x 1033 mm); iPF600: A1(22.8" x 28.5" or 580 x 724.9 mm); iPF500: A2 (16.1" x 20.1" or 410 x 512.5 mm). Each print time stated here is actual measurement of sample image output speed and is not the maximum printer speed. The data does not include data transfer time. The print speed may vary depending on the data volume and size, PC, application, software and interface. Measured by Canon Inc.

2) iPF600/500 Image Print Speed (Square Feet Per Hour) [SCID N5 ("bicycle")]OS: Windows XP SP2, CPU: Pentium4 3.2 GHz, RAM: 1 GB, Application: Adobe Photoshop 7.0, Interface: USB 2.0 Hi-Speed, Output image size: iPF600: A1(580 x 724.9 mm); iPF500: A2 (410 x 512.5 mm). Each print time stated here is actual measurement of sample image output speed and is not the maximum printer speed. The data does not include data transfer time. The print speed may vary depending on the data volume and size, PC, application, software and interface. Measured by Canon Inc.

General Graphics Printing

Need Color? Need Quality? No Problem!

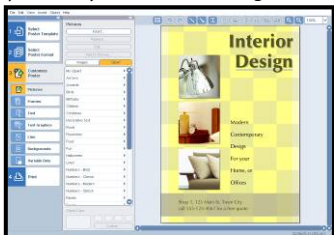
– The iPF600/500 utilize 4 newly developed dye inks to produce bold and expressive color prints with exceptional quality. Print photorealistic images and graphics at up to 2400 x 1200 dpi. Create meaningful posters, impactful presentations and signage and much more with this versatile device.



Poster printing right out of the box! -

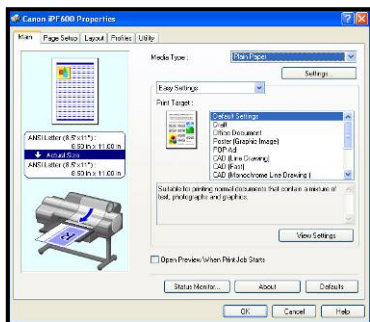
Canon PosterArtist 2006 (Windows® Only) an included 2-disc software package was developed by Canon specifically for the *Creating, Processing and Printing* of large format posters.

It is an easy to use, template-based poster creation application, designed with the Microsoft® Office™ skill level user in mind. It comes standard with a library of over 150 pre-designed templates and over 1,500 hi-resolution, royalty-free images.



Scan-to-Print, Nesting & More -

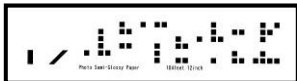
Printer Driver 2006 a Windows and Macintosh® driver that incorporates easy and advanced settings, simplified page setup options, 1-touch borderless printing, expanded color settings, ICC profile options and much more into a printer driver that is intuitive and easy to operate, but still gives even the most advanced users the tools needed to stay productive. For Windows users, the free-layout feature enables nesting and custom layouts of images or files of nearly any type. Even the most novice user can create advanced nested layouts of images, presentation slides, Microsoft® WORD documents, PDFs, and many other types. For Color imageRUNNER® device customers, this new imagePROGRAF® driver allows for easy enlargement printing by accommodating scanned files sent from the imageRUNNER device's Universal Send function.



No Cutting or Trimming! - The iPF600/500 can output full bleed edge-to-edge prints on all 4 sides in minutes on most common roll sizes. This is commonly referred to as borderless printing.

How Much Paper is Left? – The imagePROGRAF is capable of tracking how much paper is remaining on the roll, preventing print jobs from being ruined. It prints the media information (in text and barcode) directly on the roll, before it is removed from the printer. The next time that roll

is loaded, the imagePROGRAF will read the barcode and the length information will be applied automatically.



Technical Document Printing

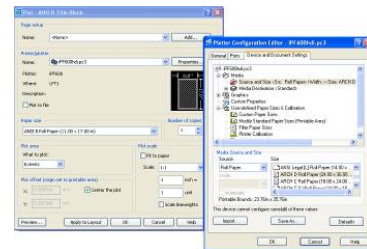
Remarkable Printing Speeds – D-Size color prints in around 30 seconds! The remarkable speed of the iPF600 and iPF500 are truly breathtaking. The technology behind the speed includes a print head that has over 15,000 nozzles, 2 channels of matte black ink and a new L-COA controller to drive it all.

Deep Black, Smudge-Resistant Lines – The iPF600/500 utilize a unique combination of pigment and dye ink, (reactive ink) to print fine, abrasion-resistant lines. This combination was designed for industry professionals where the demand to generate deep, defined and durable lines are prominent. This makes the



iPF600 and 500 the ideal candidates for technical line-work, CAD, mapping, GIS and AEC workflows.

AutoCAD Users – Canon includes a direct interface for AutoCAD in the box with every iPF600/500 printer. This Heidi driver allows the user to print directly to the device via AutoCAD (2000 – 2006). Users can expect sharp line renderings, accurate pen widths, crisp corners and intersections and much more when printing through this professional HDI driver.



No Hassle Print Head

– One of Canon's core competencies is developing durable, revolutionary thermal inkjet print heads. The iPF600 and iPF500 are beaming examples of this. With over 15,000 nozzles, this user-replaceable print head allows

the iPF600/500 to lay down ink precisely and accurately for crisp, even lines and smooth, fine graphics. Canon's new print head (PF-01) is extremely durable and long lasting. However, if it does ever need to be replaced, the user can complete the process themselves in minutes with no service call and no hassle.

Network Printing Right Out Of The Box – The iPF600/500 comes standard with a network interface built into it, so it is network ready as soon as you turn it on.